

Picture Postcard Sales List no. 10/20

Brian Lund Postcards, 15 Debdale Lane, Keyworth, Nottingham NG12 5HT

ARIEL VIEWS

1. Franco-British Exhibition, RP from a balloon pub'd Wakefield pu 1908 G.....£5
2. British Empire Exhibition, RP pub'd Fleetway VG.....£5
3. Eastham Locks, entrance to Manchester Ship Canal pub'd Valentine 1960s CVG..£5

ART & ARTISTS

Rick Geary (USA artist prolific in 1980s)

4. Wichita PC club show 1981 CVG.....£2
5. Wichita PC club show 1986 CVG.....£2
6. National Postcard Week 1987 CVG.....£2
7. National Postcard Week 1988 CVG.....£2

Jotter & Hayward Young

8. Cambridge scenes pub'd Boots (20) CVG.....£25
9. Canterbury scenes pub'd Photochrom (2) CG.....£4
10. Chester scenes pub'd Photochrom (60) CVG...£152. Cornish scenes inc. fishermen pub'd Hartmann (6, four pu) CG.....£15
11. Conway Castle pub'd Hartmann CF...£2
12. North Yorkshire scenes pub'd Gordon Smith (7) CV.....£10
13. Boldre, New Forest, The Red Lion pub'd Gordon Smith pu 1911 CG.....£2.50
14. Eton & Windsor scenes pub'd Gordon Smith (4, two pu) CV.....£6
15. Hastings scenes pub'd Gordon Smith (6, one pu) CVG.....£12
16. Isle of Wight scenes pub'd Gordon Smith (4, three pu) CV.....£6
17. Kent scenes pub'd Gordon Smith (6, one pu) CVG.....£15

See Tuck Oilettes for more Jotter pcs

A.R. Quinton pub'd Salmon

18. Worcester Cathedral 1310 CVG.....£1.50
19. Tewkesbury Abbey 1313 CG.....£1.25
20. The Malvern Hills from the Link Common 1315 CVG.....£1.50
21. Crophorne, nr. Evesham 1322 CG.....£3
22. Oxford, High St 1347 pu 1948 CG...£1.50
23. Guildford, St. Martha's Chapel 1421 CVG.....£1.50
24. Cheltenham, lake at Pittville Park 1443 pu 1918 CF.....£3.50
25. Torquay multiview 1451 pu 1926 CVG.....£5
26. Hastings multiview 1462 pu 1919 CG...£6
27. Oxford 1464 pu 1922 CG.....£3
28. Worcestershire Cottages 1470 pu 1919 CF.....£4
29. Tunbridge Wells multiview 1471 CG...£5
30. Bolton Abbey, stepping stones 1473 CG.....£2
31. Fountains Abbey from SW 1479 CVG.....£1.50
32. Fountains Hall 1481 pu 1951 CF.....£3.50
33. Thirlmere & Helvellyn 1493 CVG...£1.25
34. Teignmouth 1781 CG.....£1.50
35. Budleigh Salterton, West Cliff CVG.....£2.50
36. East Budleigh 1796 CG.....£2.50
37. Ladram Bay, The Cottage 1799 CG...£2
38. Bramber, Sussex 2011 CG.....£2
39. Hereford, Wye Bridge & Cathedral 2179 CVG.....£2
40. Kynance Cove 2194 CVG.....£1
41. Sidmouth, Esplanade & Salcombe Hill 4066 pu 1958 CG.....£1.50
42. Weston-super-Mare, swimming pool 4202 pu CG.....£2

AVIATION

43. Dublin airport with plane pu 1951 CG.£3
44. Ronaldsway airport, IOM, with Cambrian plane CVG.....£1.50
45. Voisin biplane pub'd Tuck Oilette 9943 CVG.....£3
46. Airship on convoy duty pub'd AM Davis pu 1919 CF.....£3

47. Zeppelin wreck East Anglia 1917 RP pub'd Stephenson VG.....£8

COMIC

48. Here's a nice little heart - girl with playing cards pub'd Asher CG.....£3

Mabel Lucie Attwell pub'd Valentine

49. Jobs to do will never stop 6139 pu 1963 CVG.....£2

Fred Spurgin

50. Just a glimpse of the sea pub'd A & H pu 1924 CF.....£1.25
51. We should like to see more of you pub'd Inter-Art pu 1912 CG.....£1.50

CYCLING

52. Superb RP of girl posing with bike pub'd Lister, Hull VG.....£4
53. Two ladies, one man on bikes RP VG.....£2
54. Lady cyclist by lake artist-drawn pu 1900 CG.....£4
55. Two bikes parked outside 'Cat & Fiddle' pub, New Forest pu 1929 VG.....£1.50
56. Harlech, cycle test hill (bumpy!) VG...£2
57. Man posing with bike RP, Wrexham publisher VG.....£3
58. Lady posing with bike RP VG.....£1
59. Two men posing with bikes RP G.....£2
60. Rhyl, Promenade Gardens with 5 children on 3-wheeler trikes pu 1926 G.....£2

EARLY

Court size

61. Dunham, Cheshire, Castle Mills pu 1901 CG.....£8
62. London, National Gallery VG.....£5
63. London, National gallery pu 1898 G...£7
64. Windsor multiview pub'd Valentine G.....£6

Intermediate size

65. Derwentwater CVG.....£3
66. London, The Tower VG.....£7

FIRST WORLD WAR

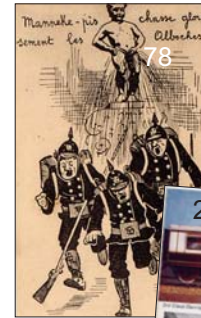
67. Bravo Belgium! (wounded soldier with flag) pub'd Valentine CVG.....£2
68. Not ashamed to die - Russian gunner artist-drawn by A. Pearse VG.....£1.50
69. Gaining the Legion of Honour by A. Pearse VG.....£1.50
70. Emile Dupuis Leurs Caboches - no. 34 German infantry CG.....£3
71. Entente Cordiale. Soldier & girl CG...£2
72. To one somewhere in France pub'd Rotary CG.....£1.50
73. When the boys come home again - Peace with honour pub'd Rotary CG...£3
74. Peace has returned with glory (flags) pub'd Rotary CVG.....£1.50

Comic postcards

75. The Gasbag (Kaiser as zeppelin) pub'd AM Davis CVG.....£6
76. Let the zeppelins come - I don't care (dog hiding) by FG Lewin CVG.....£3
77. And they didn't believe me by Dudley Buxton pub'd Inter-Art CG.....£3
78. Mannekin-Pis sprays German soldiers VG.....£3



134



78



70 94



251



145



174



8

43



252



105



365



13



264



262

Order hotline 0115 937 4079 or email
brian.lund.keyworth@gmail.com

C = coloured VG = very good condition G = good F = fair V = cards in lot vary in condition
(but all listed cards would be fine for our own collection!) RP = real photographic
pub'd = published by pu = postally used c/u = close-up o/p = original packet
u/b = undivided back

Bruce Bairnsfather

- 79. In & Out ser. 5 VG. £485. The same old moon ser. 6 pu 1918 G.....£4
- 80. That 16-inch sensation ser. 6 pu 1917 F.....£4
- 81. The Historical Touch ser. 7 pu 1918 G.....£4

'Out for Victory' series by L. Ravenhill

- 82. British Working Man CG.....£3
- 83. The allotment holder CG.....£3
- 84. The munition girl CVG.....£4
- 85. The Boy Scout with flag CVG.....£5

AA Nash pub'd Inter-Art

- 86. Will he ever return? CG.....£2
- 87. The Vacant Chair CVG.....£3
- 88. Please send back my Daddy! CVG.....£3

Donald McGill pub'd Inter-Art

- 89. Before you fool with a fool CVG.....£3
- 90. Operating on an extended front CVG.....£3
- 91. Her window! (air raid poster) CVG.....£4
- 92. Now show me a German! pu 1915 CG.....£4
- 93. They hopped me here (limerick) CVG.....£3
- 94. In the Dardan-oh! elles CVG.....£4
- 95. You won't find any' arm in this pu 1916 CG.....£3
- 96. Asphixiating gas is not confined to the Germans! CVG.....£4

Daily Mail War Pictures

- 97. Burial of two British soldiers no. 35 VG.....£1.25
- 98. Australian gunners no. 113 CG.....£1.50
- 99. Loading a trench mortar no. 139 G.....£2

War damage/scenes

- 100. Cappy (Somme) animated G.....£1.25
- 101. Belgian army, Pervyse trenches pu F.....£2.50
- 102. Salonica pu 1919 F.....£1
- 103. Peronne (Somme), wrecked street G.....£1
- 104. Ramcapelle, Belgium pu G.....£2

HOTELS

- 105. *Birmingham, the Grand advertising artist-drawn multiview 1950s pc CG.....£3
- 106. London, Hotel Gwalia pu 1912 G.....£2
- 107. London, Charterhouse Hotel pu 1904 CG.....£3
- 108. London, Simpson's-in-the-Strand. Bateman cartoon *The gentleman who asked the carver...* CF.....£2.50
- 109. Coblenz, Hotel zum Anker. Gruss aus VG.....£4
- 110. Rome, Hotel Suisse artist-drawn CG.....£4
- 111. Grindelwald, Hotel Baer artist-drawn pu 1903 CG.....£4
- 112. Grindelwald, Hotel Sckonegg VG.....£4

LARGE LETTERS

- 113. Greetings from Reading with views inside letters pu 1905 G.....£4
- 114. Many Happy Returns with actresses' faces pub'd Rotary VG.....£1.50
- 115. Best wishes for 1907 pub'd Rotary VG.....£2.50
- 116. Greetings from Dudley pub'd Woolstone Bros. CVG.....£2

MODEL VILLAGES

- 117. Bourton-on-the-Water pub'd Morris CVG.....£1
- 118. Eastbourne RP VG.....£1.50

- 119. Great Yarmouth pub'd Hinde pu 1976 CVG.....£1
- 120. Great Yarmouth CG.....£1
- 121. Wimborne Minster RP VG.....£1.25
- 122. Holland, the Hague CVG.....£1

MOONLIGHTS

- 123. New York harbour at night CVG.....£2
- 124. Church, lake & meadow pub'd Woolstone Bros. CG.....£1.50
- 125. Tal-y-llyn Lake pub'd Valentine pu 1906 CF.....£1
- 126. Bournemouth set pub'd Hartmann (6) CG.....£5

PIERS

- 127. Blackpool south shore pier & baths pu 1955 VG.....£1
- 128. Gt Yarmouth, Wellington pier pu 1960 VG.....75p

POLITICAL

- 129. Joseph Cahmberlain cartoon *Father said turn...* pu 1903 CF.....£2
- 130. The Worker's Emancipation 1909. People's Budget pc CG.....£4
- 131. Sir Winston Churchill grave at Bladon RP pub'd Midland View VG.....£1
- 132. Churchill speech & pic on decorated pc pub'd Valentine 1940 CVG.....£3
- 133. Nottingham, anti-poll tax demo 1990 RP VG.....£1.50

POSTCARD INTEREST

- 134. Dalkeith Publishing advert pcs (2) CVG.....£1
 - 135. Tayside PC Club ad for exhibition 1980s CVG.....£1
 - 136. Exeter PC Fair advert pc VG.....50p
- USA**
- 137. Windy City PC club CVG.....£1.50
 - 138. North Georgia PC club fair ad CVG.....£1
 - 139. Houston PC show ad 1983 CVG.....£1.50

RAILWAY

Stations

- 140. Carlisle, exterior of Citadel station RP pub'd WH Smith pu 1910 G.....£2
- 141. Furness pub'd Valentine pu 1907CF.£3
- 142. Holyhead, departur of boat express (LNWR official) VG.....£10
- 143. Penzance with Riviera Express pub'd Valentine G.....£2
- 144. Reading GWR exterior pub'd Frith VG.....£2

LNWR officials

- 145. Euston to Birmingham express 3rd class carriage, part of composite perforated set CF.....£4
- 146. Euston station view 1837 CVG.....£2
- 147. Entrance to Euston station with arch. Early u/b VG.....£8
- 148. New family carriage G.....£2
- 149. Anglo-American Vestibule Express G.....£3
- 150. Fleetwood, jetty & lighthouse CG.....£3
- 151. Ramsbottom pick-up water troughs VG.....£2

- 152. Signal gantry, Rugby VG.....£3
- 153. Runcorn Bridge VG.....£2
- 154. Castles - Carnarvon, Conway, Kenilworth, Warwick (4) G.....£5
- 155. SS Hibernia at Holyhead CF.....£2
- 156. On the Clyde: Caledonian Co. steamer returning from Rothesay CG.....£4

Real photos

- 157. Edward Thompson no. 500 heading express pub'd Ian Allan VG.....£1.50
- 158. 'The Mid'day Scot' pulled by 71000 pub'd Valentine VG.....£1.50
- 159. 'the Mancunian' pulled by 46166 pub'd Sweetman VG.....£1.50
- 160. 'The Master Cutler' pulled by diesel-electric loco D206 pub'd Sweetman VG.....£1.50
- 161. William Wordsworth 70030 pub'd Valentine VG.....£1.50
- 162. 'The Flying Scotsman' pulled by great central pub'd Sweetman VG.....£1.50
- 163. High pressure compound express loco 10000 crossing Forth Bridge pub'd Valentine VG.....£2
- 164. LNER loco 253 Oxforshire pub'd F. Moore VG.....£2
- 165. LNER 2743 heading express VG...£1.50
- 166. Double-headed Manchester express ascending Camden Bank VG.....£2

Coloured photos

- 167. GCR express engine pub'd Valentine CVG.....£1.50
- 168. Steam locos 1980s in 'Collectacard' series pub'd JA Dixon (15) CVG.....£4

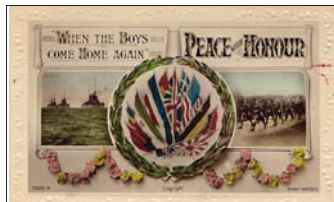
Miniature railways

- 169. Llandudno tramway, summit of The Orme RP pub'd Thompson VG.....£1.50
- 170. Manx Electric Rly IOM pu 1979 CVG.....75p
- 171. Poole Park, Dorset pub'd Hinde pu 1988 CVG.....£1
- 172. *Ravenglass & Eskdale railway. Superb views pub'd Dixon (2) CVG...£1.50
- 173. Scarborough pub'd Dennis pu 1975 CVG.....75p

ROYALTY

- 174. George IV pub'd King Insurance Co. pu 1910 CG.....£5
- 175. Queen Victoria pub'd Tuck 'Empire' pc 383 pu CF.....£3
- 176. Edward VII & Lincoln Cathedral - souvenir of 1907 visit pu VG.....£4.50
- 177. Coronation of George V artist-drawn pub'd JS Fry as advert pc CG.....£5
- 178. George V in kilt pub'd Tuck Oilette

Order from Brian Lund
Postcards - address opposite.
 Order by Lot number. Postage in UK
 75p extra per mailing. 0115 937 4079
 brian.lund.keyworth@gmail.com





269. LOUIS WAIN pub'd Tuck Oilette 9396 CG...£25



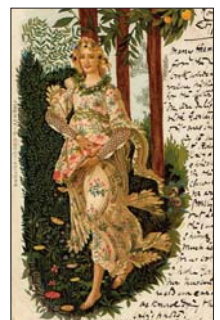
270. LOUIS WAIN pub'd Tuck ser. 539 pu 1902 CF...£25



271. LOUIS WAIN pub'd Tuck Oilette C133 pu 1907 CF...£25



275. LOUIS WAIN pub'd Stroefler pu CF...£28



276. PRIMAVERA pub'd Cocci, Florence pu 1904 CG..£10



272. LOUIS WAIN pub'd Tuck from Paris office pu 1903 CG..£35



273. LOUIS WAIN pub'd Valentine pu 1907 CF...£30



274. WISBECH fire at Collins' factory 1908 RP pub'd OldhamVG..£25



277. LOUIS WAIN pub'd Faulkner ser. 507 CG...£30



278. ROYALTY pub'd Tuck 'Empire' ser. 609 CG..£8

- 9821 pu 1913 CF.....£2
- 179. Prince Henry, Prince George in kilt pub'd Misch & Co. CVG EACH.....£2
- 180. Royal Mausoleum at Frogmore RP pub'd Russell VG.....£2
- 181. QEII Trooping the colour pub'd Hinde pu 1977 CVG.....£1
- 182. HRH Prince Gustavus Adolphus of Sweden pub'd Rotary VG.....£2
- 183. Wedding of Crown Prince of Sweden & Lady Louise Mountbatten pub'd Beagles. Wedding group VG.....£3
- 184. Ferdinand, Crown Prince of Roumania pub'd Beagles VG.....£3
- 185. HRH Crown Prince Leopold of Belgium pub'd Beagles VG.....£2
- 186. HM German Empress pub'd Beagles VG.....£3
- 187. Kaiser & Kaiserin RP G.....£4

RURAL

- 188. In the stackyard (horses & carts & haystacking)pub'd Valentine pu 1905 CF.....£1
- 189. Farm worker scything RP pu 1910 VG.....£1
- 190. Cutting the grain pub'd Valentine pu CF.....£1
- 191. Across the brook (with horse & cart) pub'd Tuck VG.....£1.50
- 192. Sheep - a champion pen VG.....£1
- 193. The wood gatherers pub'd Tuck VG.....£1.50
- 194. Haymaking scene on birthday greetings pc pub'd Millar & Lang pu 1909 CG.....£1.25
- 195. Jersey cows pub'd Valentine G.....£1
- 196. Rural Life: The sower pub'd Tuck pu 1905 CVG.....£1.50

SHIPPING

- 197. Russian outrage on Hull trawlers pub'd Scott Russell pu 1904 G.....£3
- 198. Same incident, general view pub'd Valentine F.....£2

Liners

- 199. American Line SS *St. Louis* pub'd Tuck Oilette CF.....£3
- 200. Bibby Line official early u/b tho' pu 1910 F.....£6
- 201. Canadian Pacific *Duchess of Atholl* pu 1937 VG.....£2.50
- 202. Canadian Pacific official SS *Montrose* VG.....£2
- 203. Cunard RMS *Franconia* by Kenneth Shoemsmith CVG.....£4
- 204. Cunard RMS *Samarra* artist-drawn pu 1953 CG.....£2
- 205. Cunard RMS *Mauretania* artist-drawn CG.....£1.50
- 206. Cunard RMS *Queen Elizabeth* main restaurant RP G.....£1.50
- 207. Cunard RMS *Scythia* artist-drawn CVG.....£4
- 208. Orient Line RMS *Orontes* VG.....£1.25
- 209. Orient Line SS *Osterley* RP pub'd WH Smith pu 1920 G.....£2.50
- 210. Pacific Steam Navigation Co. SS *Orduna* RP VG.....£3
- 211. P. & O. *Arcadia* RP pu Aden 1955 VG.....£3

- 212. SS *Ile de France* artist-drawn pub'd Salmon CVG.....£1.50
- 213. SS *Normandie* RP pub'd Valentine VG.....£1.50
- 214. United States Lines SS *Leviathan* RP pub'd WH Smith VG.....£3
- 215. White Star Line MV *Britannic* artist-drawn CVG.....£3
- Ferries**
- 216. British Railways SS *Amsterdam* RP VG.....£1.25
- 217. RMS *Isle of Jersey* VG.....£1
- 218. SNCF Cote d'Azur RP pu 1955 VG.....£2
- 219. Le Victoria approaching Calais pub'd LL 129 pu 1930 CG.....£2

Harbours

- 220. Barcelona RP VG.....£1.50
- 220a. Bridlington RP, animated pu 1912 VG.....£3
- 221. Fishguard pu 1913 CF.....£1.50
- 222. Folkestone in 'Peacock' series pu 1903 CF.....£3
- 223. Genoa RP VG.....£1.50
- 224. Kingstown, Dun Loughaire, pier & mail boats RP VG.....£1.50
- 225. Le Havre VG.....£1.50
- 226. Villefranche with Frech naval vessels RP VG.....£1.50

Merchant

- 227. *Bergen Line MS *Midnatsol*, *Nordlys*, *Plarys*, *Leda*, *Venus* CVG EACH.....£1.25
- 228. Manchester Liners Ltd RPs - *Venture*, *Miller*, *Faith*, *Trader*, *Pioneer* VG EACH.....£1.50

Naval

- 229. Submarine D1 & HMS *Drake* pub'd Photochrom VG.....£4
- 230. Submarine D7 RP VG.....£4
- 231. HMS *Sheffield* RP pub'd Valentine. Back stained F.....£1.50
- 232. HMS *Frobisher* RP pub'd Valentine VG.....£3
- 233. HMS *Birmingham* RP pub'd Mack VG.....£3
- 234. HMS *Cardiff* RP F.....£1.50
- 235. HMS *Revenge* with Avro Anson flying over RP pub'd Valentine F.....£2
- 236. Torpedo boats, destroyers and gunboats CG.....£3

THEATRICAL

- 237. Miss Muriel Juin ink-autographed pub'd Rotary VG.....£3
- 238. Mabel Love on midget pc pub'd Rotary pu 1904 VG.....£2
- 239. Excellent multiviews pub'd Rotary. Isobel Elsom, Vera Wilkinson, Stephanie Stephens, Fay Compton, Peggy Kurton CVG EACH.....£2

TOPOGRAPHICAL

- 240. Ansdell (Lytham), Pembroke House School CVG.....£2
- 241. Bromsgrove, Grammar School pub'd Wrench VG.....£2
- 242 Cheddar, Cox's cave pub'd Frith (3) VG.....£3
- 243 Gloucester, Northgate Chapel pub'd Brooke VG.....£3
- 244. Hartpury (Glos) Wesleyan church exterior & interior (2)

- 245. London, Tower pub'd LL 61 VG.....£1.25
- 246. Malham Tarn RP pub'd Turner VG.....£3

Bedfordshire

- 247. Bedford, High St., well-animated RP pub'd Lilywhite VG.....£20
- 248. Luton, Market Hill with tram pub'd Valentine VG.....£4
- 249. Luton, Town Hall with tram pub'd Valentine VG.....£2.50
- 250. Shefford, High St., animated RP. Damage at top pu 1912 F.....£6

Berkshire

- 251. Cleve Lock, Goring, lovely RP VG...£4
- 252. Eton College quad RP with loads of students VG.....£6
- 253. Hungerford, High St pub'd TVAP pu 1952 G.....£3
- 254. Hurley, Ye Olde Bell RP (phone no. 141!) VG.....£6
- 255. Reading, Broad St., busy animated with tram pub'd Bryant CG.....£3
- 256. Sonning Lock, lovely RP VG.....£2

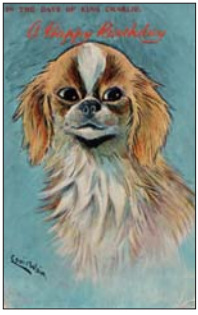
Buckinghamshire

- 257. Aylesbury, Market Square, animated RP pub'd Shelton pu 1921 VG.....£6
- 258. Castle Thorpe RP multiview inc. railway station pu 1914 VG.....£6
- 259. Fenny Stratford, Aylesbury St RP pub'd WH Smith VG.....£8
- 260. Marlow, High St. RP pub'd WH Smith F.....£3
- 261. Newport Pagnell, Empire Day with street procession VG.....£12
- 262. North Grawley village street scene pub'd Blake & Edgar pu 1913 VG.....£10
- 263. Stantonbury, schools & church pub'd Hutchinson. Children in playground VG.....£6
- 264. Stony Stratford, RP of horse & carriage with driver pub'd Buttrum G.....£10

Cambridgeshire

- 265. Wisbech, Market Place, superb RP pub'd Valentine VG.....£10
- 266. Wisbech, steam tram pub'd Photochrom VG.....£12
- 267. Wisbech, factory fire damage (probably Collins 1908) RPs pub'd Lilian Ream (20 VG.....£30
- 268. Wisbech, North Brink & Girls' High

Order from Brian Lund
Postcards - address opposite.
 Order by Lot number. Postage in UK 75p extra per mailing. 0115 937 4079
 brian.lund.keyworth@gmail.com



279. **LOUIS WAIN** pub'd Pictorial PC Co. CG...£45



280. **LOUIS WAIN** pub'd Tuck Oilette 8864 pu 1920 CF...£15



281. **LOUIS WAIN** pub'd anon pu 1903 CF...£18



282. **LOUIS WAIN** pub'd Tuck Oilette 8819 pu 1915 CF...£50



283. **SANTA** hold-to-light CG...£75



284. **PRETTY LADIES** pub'd Stroefler CVG...£3



285. **PORT SUNLIGHT**, superb animated RP pub'd Davies pu 1905 VG...£15



286. **WOLVERTON**, Labour women's rally RP G...£20



287. **NEWPORT PAGNELL**, Tickford St. animated RP pub'd Lily-white VG...£15



288. **COLNBROOK** High St. animated RP pu 1921 G...£25



289. **KAISER & FRANZ JOSEF** CF...£6



290. **IOW, THE NEEDLES** intermediate size pu 1899 VG...£10



291. **NYK LINE** ship pu Shanghai 1928 One stamp removed CVG...£20



292. **GLAMOUR** pub'd Stewart & Woolf CVG...£8



293. **GLAMOUR** pub'd Meissner & Buch CVG...£8

Order hotline 0115 937 4079 or email brian.lund.keyworth@gmail.com



294. **RAMSGATE** harbour fine animated RP pub'd Short pu 1914 G...£12



295. **EMBROIDERED SILK** Kitchener connection. Insert card CG...£35



296. **PRETTY LADIES** pub'd Munk pu 1907 G...£2



297. **SUBMARINE L24** sunk in Channel 1924 after collision RP pub'd Cozens VG...£20



298. **SCOUTS**. Newport Pagnell Rifle Club Scouts c.1910 VG...£12



299. **BARNUM & BAILEY** early u/b pu 1903 VG...£30



300. **FIRE ENGINE**. Nottingham City Fire Brigade special squad 1917 RP F...£30



301. **GLAMOUR**. Lady in hammock CVG...£8



302. **AVIATION**. Colonel Cody's military aeroplane at Aldershot G...£10



303. **AVIATION**. Les Pionniers de l'air - Wilbur Wright pu 1908 VG...£8



304. **AVIATION**. The King at Aldershot watching one of the latest army biplanes pu 1911 VG...£8



305. **AVIATION**. Colonel Cody's military aeroplane at Aldershot G...£10

- School RP pub'd Valentine VG.....£4
- Cheshire**
306. Northwich subsidence - street lifting & shoplifting pu 1905 F.....£5
307. Northwich, subsidence & leaning house pu 1905 F.....£5
308. Northwich, London Rd subsidence RP pub'd Davis VG.....£10
- Cornwall**
309. Boscastle, general view RP pub'd Photochrom VG.....£2
310. Bude, attractive view in 'Peacock' series pu 1911 CG.....£1.50
311. Falmouth from Castle Drive inc. view of railway pub'd Hartmann CVG.....£2
312. Lamorna, old mill pub'd Frith VG.....£1.25
313. Phillack, the New Inn RP pub'd Overland VG.....£2
314. St. Ives, mending the nets pu 1937 VG.....£2
315. Stratton street view pub'd Frith pu 1915 VG.....£1.25
- Cumbria**
316. Hawkshead street scene RP pub'd Brunskill pu 1906 G.....£6
317. Walney Bridge from the beach RP pub'd Sankey pu 1930 G.....£6
- Lincolnshire**
318. *Lincoln, Saltergate animated RP pu 1932 G.....£2
- 1950s/1960s**
319. Abingdon, East St. Helen's St pub'd TVAP pu 1953 F.....£2
320. Amersham, Market Square, animated RP pub'd Lilywhite pu 1964 VG.....£3
321. Appleby, outdoor swimming pool pub'd Harvey Barton pu 1965 CG.....£3
322. Bedford, High St. with bus CVG.....£2
323. Boscastle, Floral Dance pub'd Overland G.....£2
324. *Callington street scene RPs pub'd Frith (2) VG.....£2
325. Carlisle, Crescent & Citadel RP pub'd Millar & Lang. Loads of cars! Posted 1962 VG.....£1.50
326. Carter Bar Eng-Scot border with lots of vehicles pub'd Lilywhite VG.....£3
327. Dockray, the Royal Hotel RP pub'd Abrahams VG.....£1.50
328. *Horsforth (Leeds), ring road roundabout pub'd Frith pu 1962 VG.....£2
329. Newport Pagnell, High St. animated RP pub'd Landscape View VG.....£4
330. Southend, pier pu 1969 CG.....£6p
331. Sunderland, Bridge St, highly animated pub'd Millar & Lang CVG.....£3
332. Wantage, The Square, animated RP pub'd Frith pu 1965 G.....£3
- 1970s-1990s**
333. *Bideford, fish shopfront CVG.....75p
334. *Falmouth, Crazy Golf course pub'd Hinde CVG.....£1
335. *Guernsey, Hanging strawberry Farm pub'd Hinde CVG.....£1
336. *Keyworth fresh fish merchant CVG.....£1
337. *Keyworth blade-sharpener CVG.....£1
338. *Minehead, Crazy Golf course CVG.....£1
339. Moffat High St. with cars, shops pu 1979 CVG.....£1
340. Ottery St. Mary street scene CVG.....75p
341. *Scarborough funfair pub'd Dennis CVG.....75p
342. Scarborough, harbour & castle from air pub'd Bamforth pu 1975 CVG.....£1
343. Scarborough, North Bay swimming pool pu 1972 CG.....£1.25
344. *Severn Bridge from service station pub'd Valentine pu 1974 CVG.....£1.50
345. *Twickenham fire pub'd Gadd CVG.....£1
346. *Twickenham 1987 storm pub'd Gadd CVG.....£1
347. Upminster windmill pu 1988 CVG.....75p
348. Whitby, harbour pub'd Bamforth pu 1973 CVG.....75p
349. * Jersey, St. Brelade's Bay pub'd Hinde pu 1978 CG.....£1
- 2000-present (modern)**
350. *Severn Valley floods multiview CVG...75p81. *Staithes. Brilliant selection of 'Ann Maid' pcs pub'd Lawson. Superb photos (22) CVG.....£7.50
- with garages or petrol pumps**
351. *Brightstone IOW street scene with garage pub'd Judges pu 1980 CG.....£1
352. Carrbridge street scene CVG.....£1.50
353. Chideoak, Dorset street scene pub'd



Brian Lund's Picture Postcard Magic

- Dixon CG.....£1.50
354. *Churt, Surrey - shops, garage, cars pub'd Judges CVG.....£1.25
355. Glenshee, garage pub'd Dixon pu CG.....£1.50
356. Gullane street with garage pu 1979 CVG.....£1.50
357. Lochearnhead village with 3 pumps CVG.....£1.50
358. Westgate-in-Weardale, Britton Hall. 4 pumps, caravan site pub'd Frith pu 1966 CVG.....£3

RAPHAEL TUCK OILETTES

359. Middlesex ser. I 7127 by Jotter (4)CG.....£8
360. Work-a-day Sheffield 7676 by Jotter (3, two pu) CF.....£7
361. Outside Sheffield 7697 (5, three pu) CV.....£10
362. Helston, Marconi Telegraph Station 7740 CVG.....£5
363. Staffordshire ser. II 7751 by Jotter (3) CVG.....£6
364. County Wicklow 7767 by Jotter (5, three pu) CG.....£10
365. County Dublin 7782 by Jotter (4, three pu) CG.....£8
366. County Mayo 7799 by Jotter (6) CVG.....£15
367. Picturesque Cheshire - Old Timbered Houses 9413 (3, one pu) CVG.....£7.50
368. Penrith, The George Hotel pu 1912 CG.....£4

OVERSEAS

369. New York, Luna Park, Coney Island, well-animated (2) CVG.....£4
- John Hinde pub'd**
370. *Tanzania, Lutheran Church pu 1980 CG.....£1
371. *Nigeria, flame Trees pu CF.....£1
372. *Valletta, Queen's Square CG.....£1
373. *Paphos, Cyprus, farming scenes (2, one pu) CG.....£2.25
374. *Nassau, Bahamas, Government House pu 1966 CVG.....£1
375. *Nassau market scenes (2, one pu) CG.....£3
376. *Nassau, Beach Hotel pu 1976 CG.....£1
377. *Bermuda beach CVG.....£1
378. *Bermuda, Hamilton harbour CVG.....£1
379. *Malta, Mdina CVG.....£1
380. *Tenerife, El Teidi - snow scene CVG.....£1

MODERNS

381. Keyworth (Notts) on VE Day anniv. 2020 (2).....£1
382. Lockdown in Keyworth 2020 (2).....£1
383. Lockdown in Woolaston (Glos) (2).....£1
384. Lockdown in Southend-on-Sea (2).....£1



384. **MUSIC.** Trio of female musicians F...£3



385. **AVIATION.** Army airship Gamma II pub'd May VG...£6

Brian Lund looks at Countryside cards

In Edwardian days, rural and village life was intimately bound up with farming, and large numbers of people worked on the land in (mostly) pre-mechanised seasonal jobs. The industry was hugely labour-intensive, horses were the principal means of power, and farms were generally small operations. Townspeople were generally divorced from this life; access to the countryside was limited, and most people didn't have the time to spend on leisure activities in the countryside. But for picture postcard publishers, agriculture and rural life were great opportunities to bring images to people living in towns. A wealth of material was published, from superb real photographic cards showing haymaking and threshing scenes to artist-drawn paintings of the rural idyll. Photographers focused on ploughing with horses, labourers and animals in the fields, potato-planting, fruit and hop pickers, and country sports. To town and city dwellers, postcards opened a world with which they would be generally unfamiliar, and for modern-day historians, they present a marvellous archive of source material on agricultural practices. One artist to concentrate on rural scenes was Harry Payne, much-better known for his military studies. Payne designed many sets for his principal publisher Raphael Tuck, with series titles such as Devonshire Lanes, Farm Life and Daughters of the land. In 1981, Picton's Priced Postcard Catalogue and Handbook, compiled by Ron Mead and Joan Venman, included a

special supplement checklisting and pricing Harry Payne cards. The 30+ sets were rated at between £2 and £10 a card. Today, Picture Postcard Values gives them a

Brian Lund's Picture Postcard Magic

Brian Lund looks at The Golden Age of London's railway stations

The Edwardian era was the age of railway romance in the wider sense (though plenty of comic postcards featured couples kissing in a tunnel break), journeys filled with anticipation and excitement, travellers royally dressed, and splendid steam engines in vibrant colours pulling trains with exotic carriages. Railway stations were attractive to postcard photographers, and are among the most prized of all topographical cards. It is more unusual to find postcards of stations painted by artists; in fact only London's termini had the honour of entire postcard sets devoted to them. Three publishers were responsible for five sets of six that I consider are among the best of topo postcard art. First in line was a series published by Locomotive Magazine, using an uncredited artist to show platform views with trains of Paddington, Liverpool Street, Euston, King's Cross and St. Pancras, along with one more that I haven't yet come across. Raphael Tuck (of course!) published two sets. Oilette 9279 featured Charing Cross, Paddington, King's Cross, Waterloo, Euston and St. Pancras, while 9383 included exterior views of Moorgate Street, Broad Street, and Liverpool Street, a station on the Central Tube line, London Bridge interior and Marylebone. Again, no artist was credited. But the best sets of all, I feel, were published by Misch & Co. and showed off the paintings of Hermann Fleury. He worked principally for Gottschalk Dreyfus & Davis publishers and illustrated many of their 'Star' series postcards, but the railway station cards are truly atmospheric. Despite a sometimes questionable sense of perspective, Fleury brought the platforms to life with fabulously-dressed passengers, luggage, porters and lots of waving. Series 331 included Paddington, Euston, Liverpool Street, Kings Cross, Waterloo and St. Pancras. Series 332 had two of both London Bridge and Victoria, along with Marylebone and Charing Cross. All these sets are difficult to find, but very well-worth snapping up when you see any.



blanket price of £5. Recent eBay prices realised range from £2 to £7. In other words, they haven't appreciated much in 40 years. You could draw the conclusion that they were overpriced in 1981 or that they are terrific value now. I'd opt for the latter!

- 1 A marvellous real photographic postcard that would sell for some £40, showing a labour-intensive haymaking scene at Blockley, Worcestershire.
- 2 Harvesting scene on a postcard from E.A. Schwerdtfeger, who had distribution premises in London and a printing works in Berlin. The card was posted in 1913.
- 3 A scene in Cirencester Park from local publisher W. Dennis Moss.
- 4 Lots of hop-picking postcard scenes were published, this one showing Londoners picking in Kent. Card published by A.N. Hambrook of Snodland in their 'Invicta' series. Most rural postcards can be picked up at prices ranging from £1 to £5, but there are exceptions (see illus. 11).

